

# THE RIVERWALK

2,534 Sq Ft, 4 Beds, 3 Baths



**HISTORYMAKER  
HOMES**

## ELEVATION T2 -STONE



## ELEVATION T1



## ELEVATION F1



Home and community information, including pricing, included features, terms, availability and amenities, are subject to change and prior sale at any time without notice or obligation. Drawings, pictures, photographs, video, square footages, floor plans, elevations, features, colors and sizes are approximate for illustration purposes only and will vary from the homes as built. Images do not reflect a racial or ethnic preference. Home prices refer to the base price of the house and do not include options or premiums, unless otherwise indicated for a specific home. Nothing on our website should be construed as legal, accounting or tax advice. Incentives and seller contributions may require the use of title companies or certain lenders, some of which may be affiliates of HISTORYMAKER Homes, and could affect your loan amount. Not all people will qualify for all offers. Promotional offers are typically limited to specific homes and communities and are subject to terms and conditions. Plans, elevations, dimensions, and treatments may vary between communities. Please consult a HISTORYMAKER Homes sales agent and review a home sales contract for additional information, disclosures and disclaimers.

# THE RIVERWALK

2,534 Sq Ft, 4 Beds, 3 Baths



## ELEVATION P1



## ELEVATION M1



## ELEVATION P2



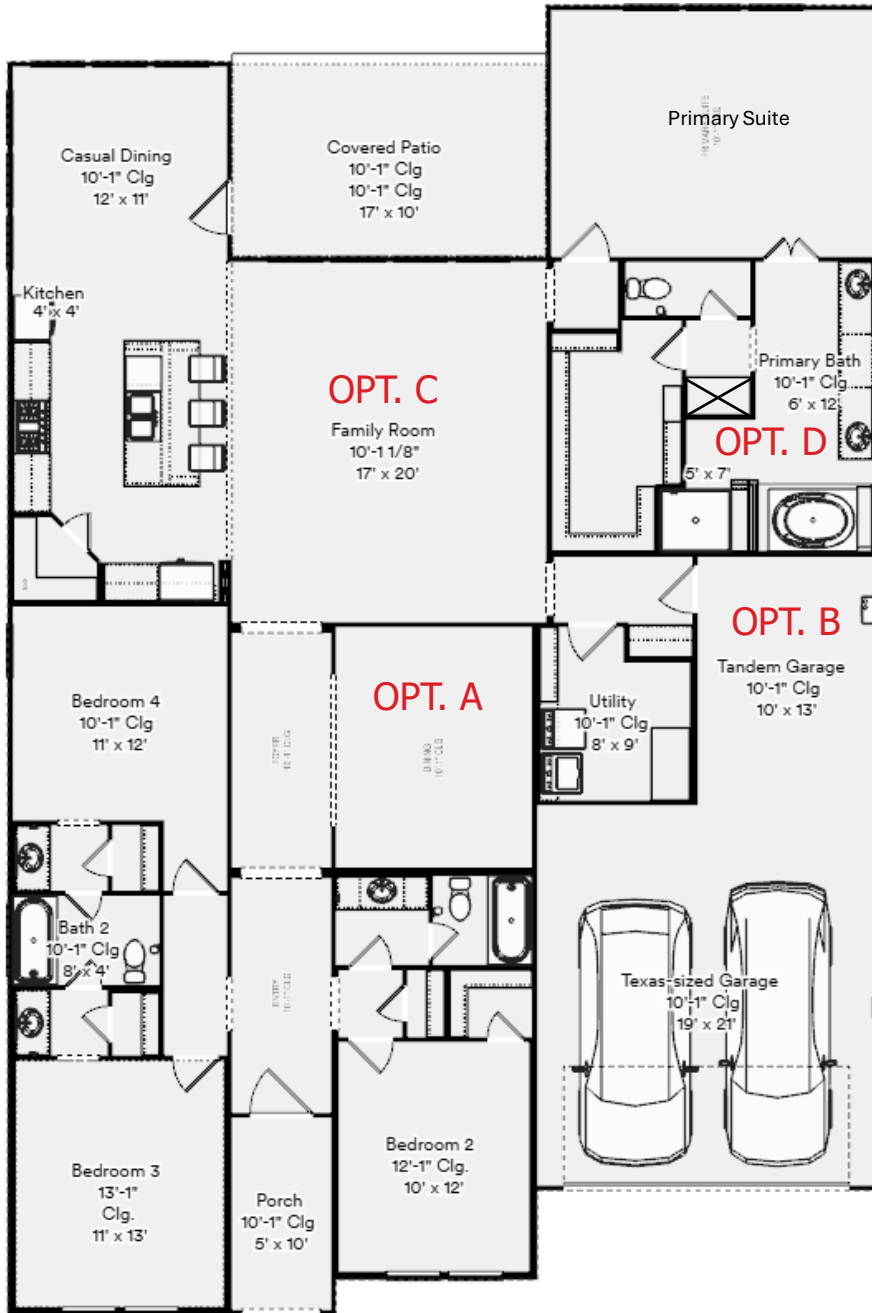
# THE RIVERWALK

## 2,534 Sq Ft, 4 Beds, 3 Baths

PLAN SUBJECT TO CHANGE



### OPTIONAL PATIO & PRIMARY EXTENSION



**OPTION A**  
Dining (Standard)  
Study  
Media

**OPTION B**  
Tandem (Standard)  
Study  
Media

**OPTION C**  
Cathedral Ceiling

**OPTION D**  
Primary Bath (Standard)  
Alternate Bath

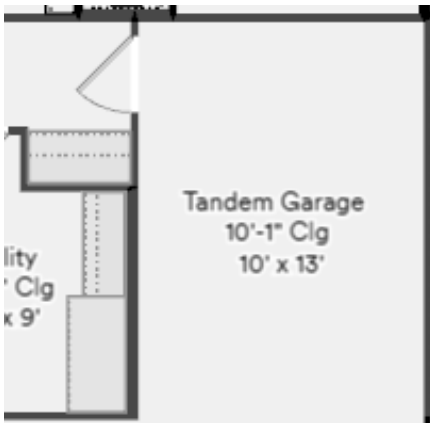
# THE RIVERWALK

2,534 Sq Ft, 4 Beds, 3 Baths

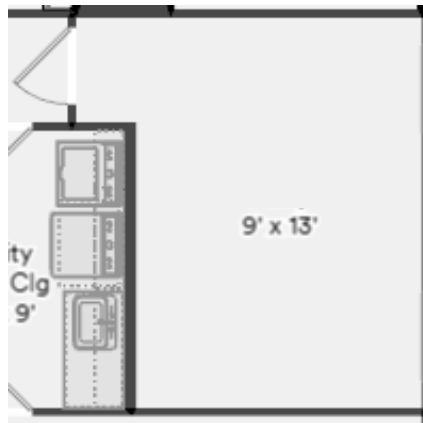
PLAN SUBJECT TO CHANGE



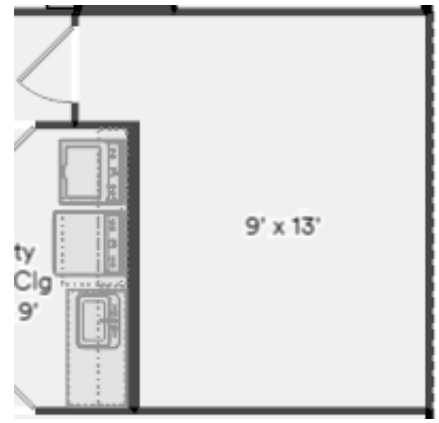
**OPTION B**  
Tandem  
(Standard)



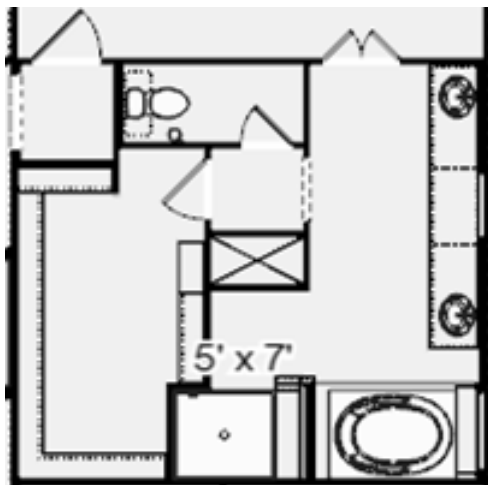
**OPTION B**  
Study  
(with windows)



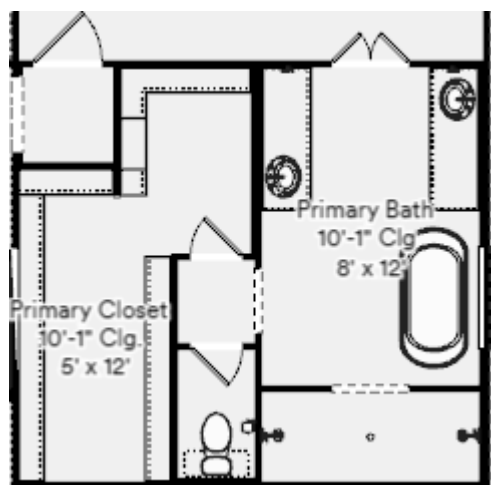
**OPTION B**  
Media  
(without windows)



**OPTION D**  
Primary Bath



**OPTION D**  
Alternate Bath



# THE RIVERWALK

2,534 Sq Ft, 4 Beds, 3 Baths



Home and community information, including pricing, included features, terms, availability and amenities, are subject to change and prior sale at any time without notice or obligation. Drawings, pictures, photographs, video, square footages, floor plans, elevations, features, colors and sizes are approximate for illustration purposes only and will vary from the homes as built. Images do not reflect a racial or ethnic preference. Home prices refer to the base price of the house and do not include options or premiums, unless otherwise indicated for a specific home. Nothing on our website should be construed as legal, accounting or tax advice. Incentives and seller contributions may require the use of title companies or certain lenders, some of which may be affiliates of HISTORYMAKER Homes, and could affect your loan amount. Not all people will qualify for all offers. Promotional offers are typically limited to specific homes and communities and are subject to terms and conditions. Plans, elevations, dimensions, and treatments may vary between communities. Please consult a HISTORYMAKER Homes sales agent and review a home sales contract for additional information, disclosures and disclaimers.